



smartAKIS  
Smart Farming Thematic Network



PA4ALL



INSTITUTE  
BioSense

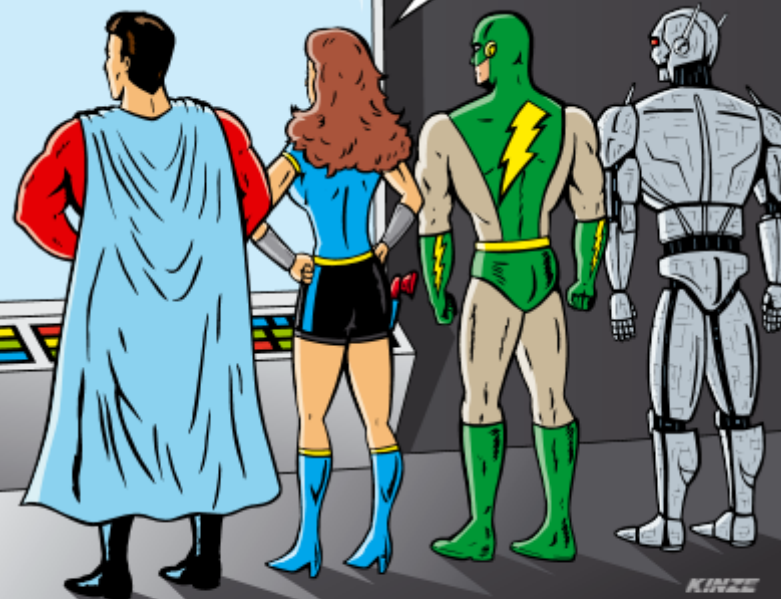


INSTITUTE  
BioSense

*"SAVREMENE  
TEHNOLOGIJE PRUŽAJU  
POLJOPRIVREDNICIMA  
NOVE MOGUĆNOSTI DA  
UNAPREDE SVOJU  
EFIKASNOST"*

*FROM: PHIL JENNINGS,  
KINZE MANUFACTURING  
SERVICE MANAGER*

PRAVO KAŽU...



A U MEĐUVREMENU...

"POLJOPRIVREDA JE PRERASLA U NEVEROVATNO SOFISTICIRANU PRIVREDNU OBLAST, I DANAS JE ONA POSAO IZ SNOVA ZA ZALJUBLJENIKE U TEHNOLOGIJU."  
"NIJE NIKAKVO ČUDO DA KOMPANIJE POPUT GOOGLE-A GLEDAJU NA NAŠ SEKTOR S VELIKIM INTERESOVANJEM."\*

\*Charlie O'Brien,  
prvi potpredsednik AEM  
i rukovodilac sektora za  
poljoprivredu



Activate Windows  
Go to Settings to activate Windows.



smart **AKIS**  
Smart Farming Thematic Network

# H2020 Smart-AKIS

Odgovoriti na globalni zahtev za ishranom više od 9 milijardi ljudi 2050

Primenom IKTa- u poljoprivredi: upravljanje informacijala; precizna poljoprivreda; automatizacija i robotika

Povezivanje poljoprivrednika i tehnologija

13 partnera iz 8 zemalja

30 meseci (od 01.03.2016.)

€ 1,997,731.25 od Horizon 2020

Ideja

Kako?

Cilj

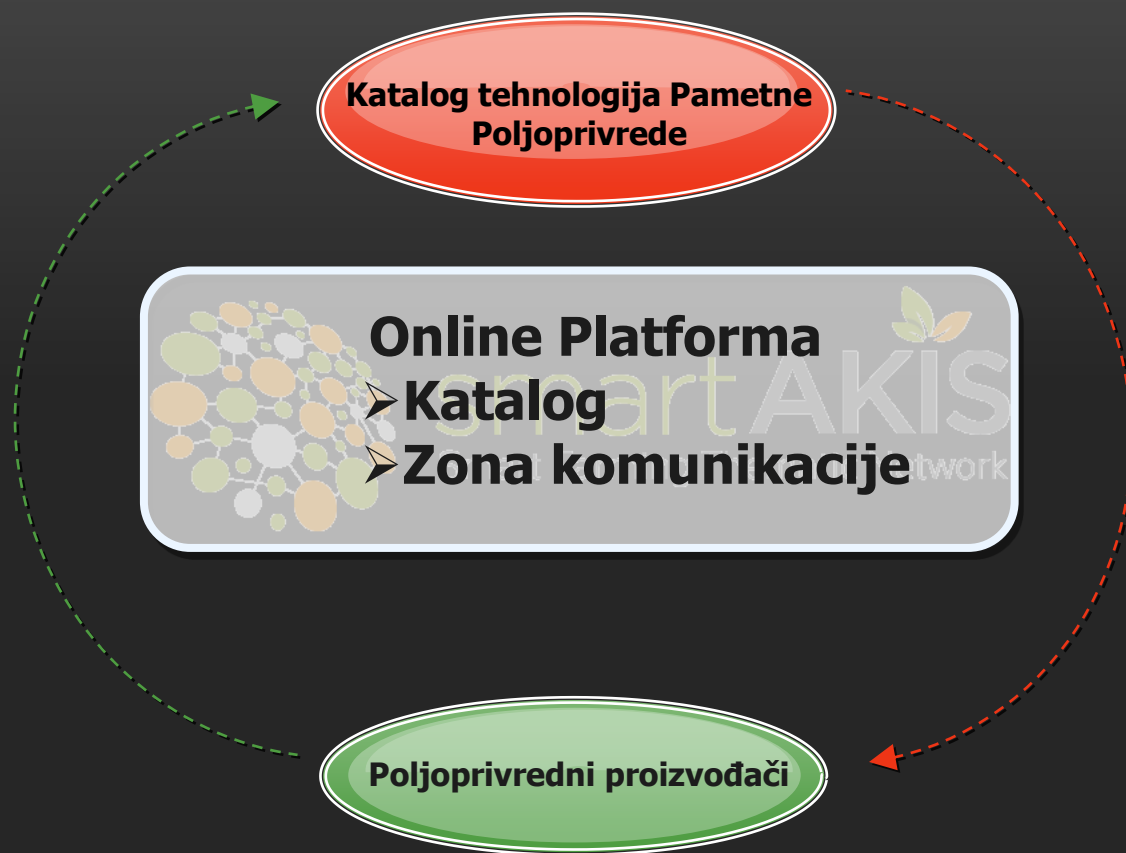
Partnerstvo

Trajanje

Budžet



# Platforma Pametne Poljoprivrede – katalog tehnologija i zona komunikacije



# Kalendar radionica

Feb. 2017 – May 2018

1<sup>o</sup> Transnational  
Innovation Workshop  
in Spain: Nov. 2017

2<sup>o</sup> Transnational  
Innovation Workshop  
in Serbia : Mar. 2018

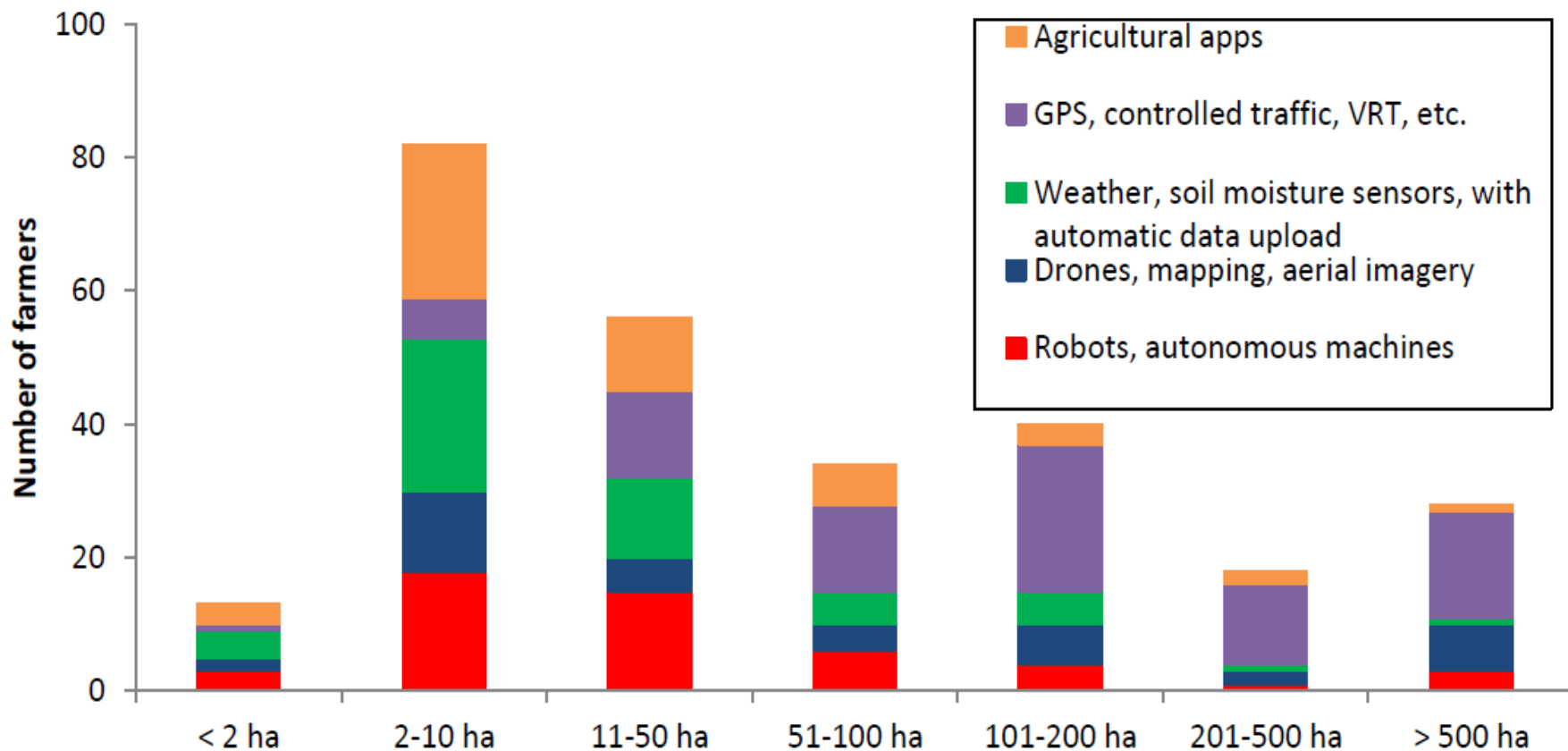
1<sup>o</sup> Regional Innovation  
Workshop in 7 Hubs  
Jan. – mid March 2017

2<sup>o</sup> Regional Innovation  
Workshop in 7 Hubs  
April – June 2017

Expertise  
phase

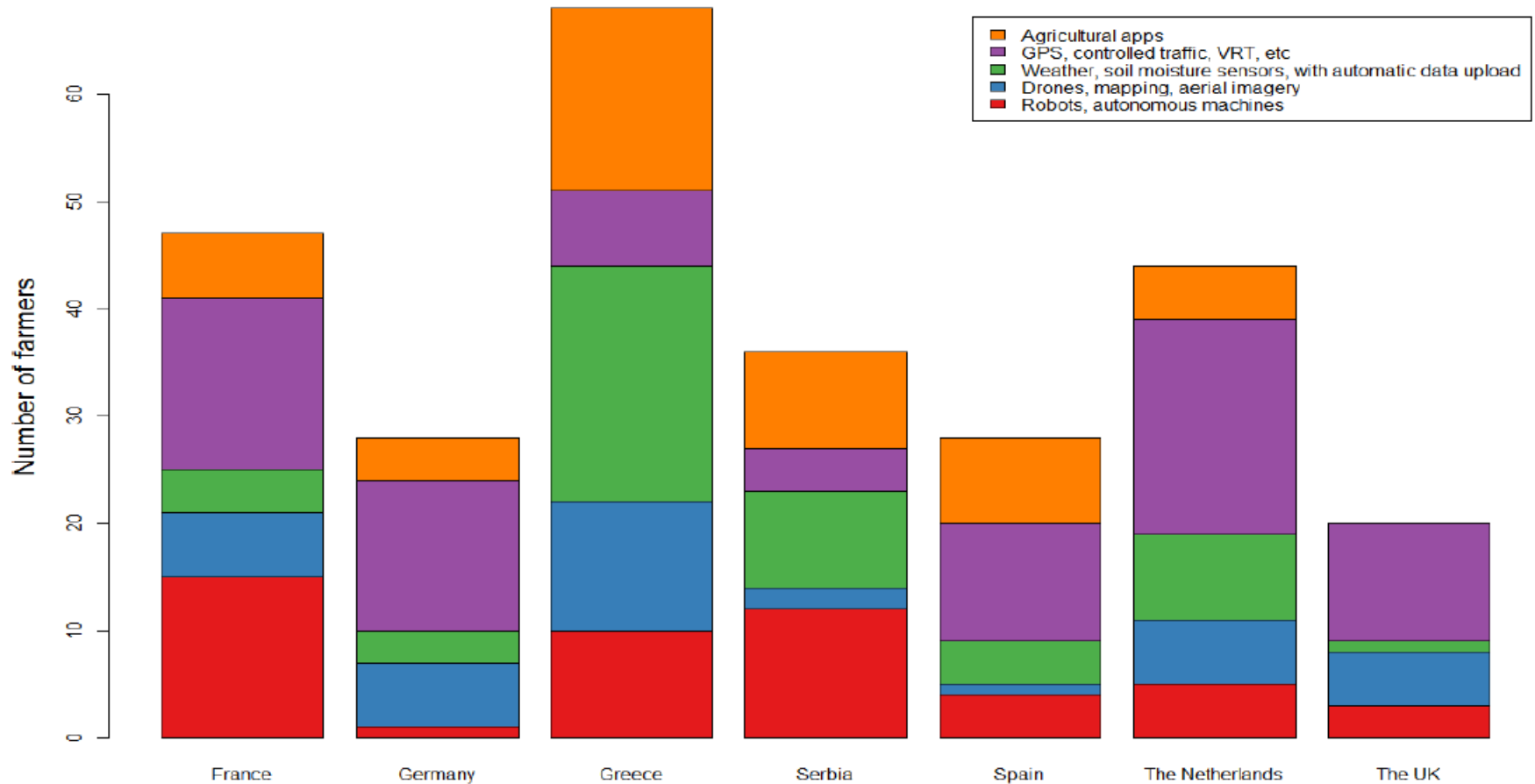
3<sup>o</sup> Regional Innovation  
Workshop in 7 Hubs  
January – March 2018

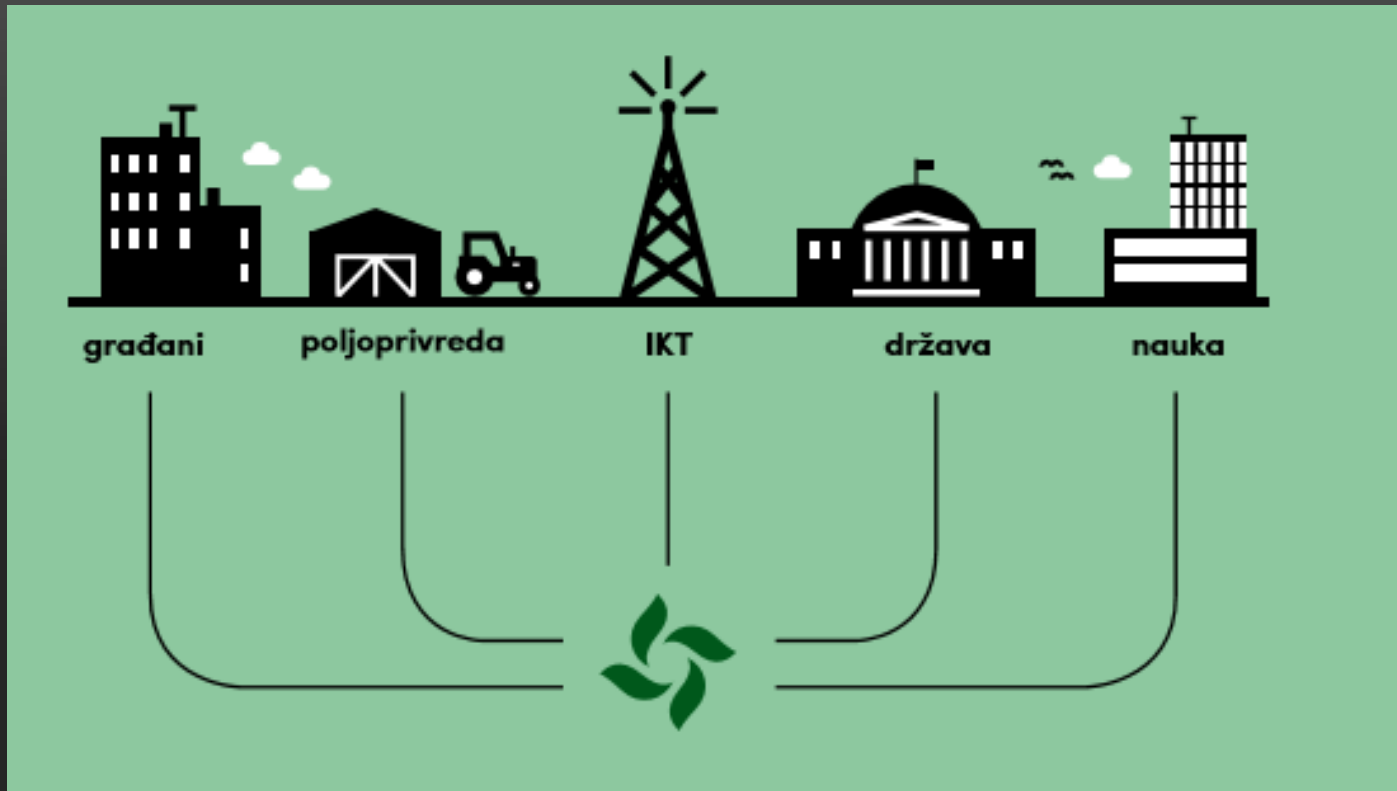
# Zastupljenost tehnologija po veličini poseda





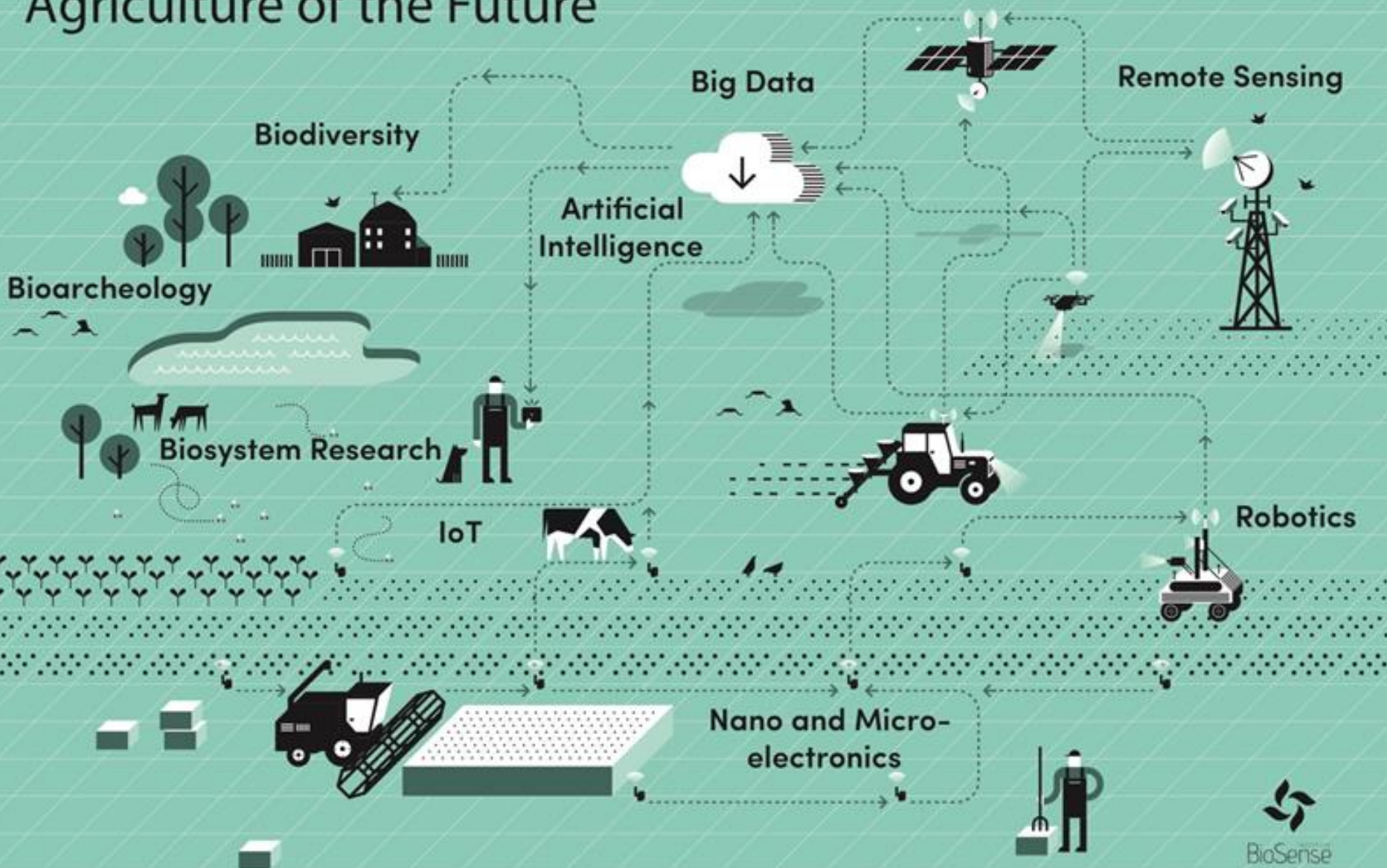
# Šta bi farmeri u najvećoj meri koristili?





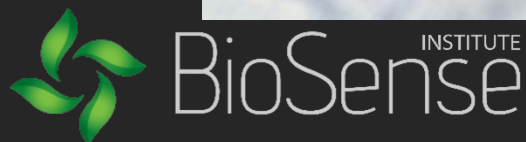
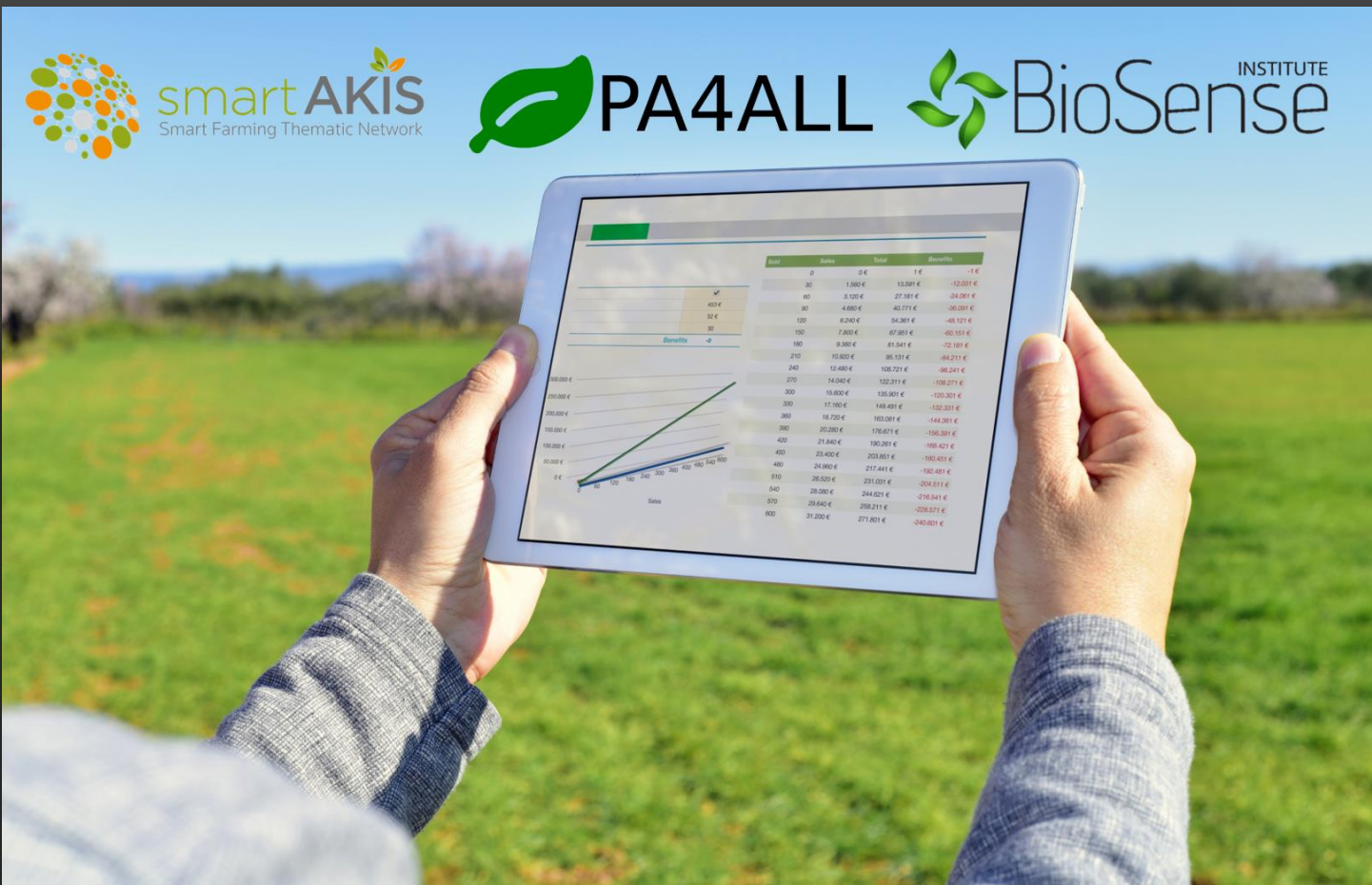
BioSense Vision

# Agriculture of the Future





# PoljoTeh/ 14. Mart 10h, Novi Sad, AP Vojvodine





**Hvala!**

[www.biosense.rs](http://www.biosense.rs)